

HP referentne arhitekture za Oracle Grid na HP Blade sustavima

- HROUG 2010, Rovinj
- Dr.sc. Draško Tomić
- HP technical consultant
-

Agenda

- Referentne arhitekture za Oracle Grid na HP Blade sustavima
- HP Converged infrastruktura
- Blade Matrix
- Primjene
- Live demo on HP Blade Matrix

Referentne arhitekture za Oracle Grid na HP Blade sustavima



ORACLE

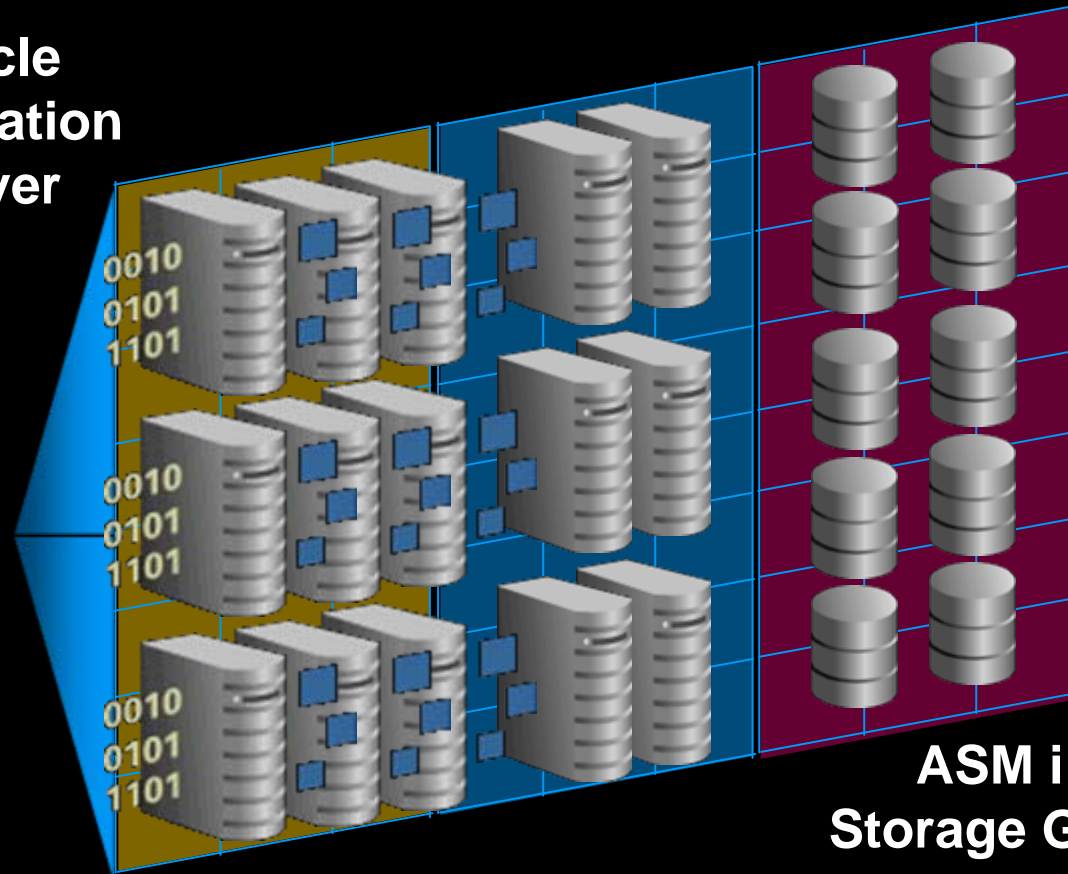


Oracle Grid komponente

Oracle
Application
Server



Oracle Enterprise
Manager i
Grid Control



Oracle Database i
Real Application
Clusters

ASM i
Storage Grid

Enterprise Manager Grid Control

Dashboards and Reports

Application Management

Oracle Infrastructure Management

Extended Infrastructure Management

Configuration
Management

Automation

Application
Performance
Management

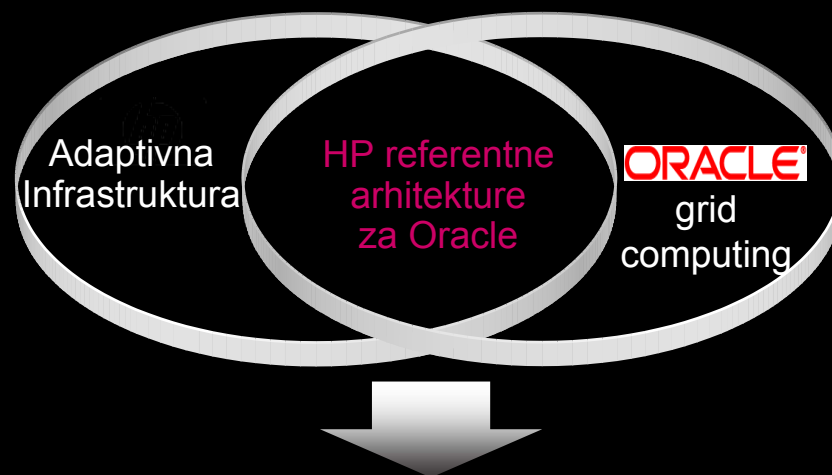
Service
Level
Management

Configuration Management DB
(Discover & Reconcile)

Extensibility and Interoperability
(Open Standards, Open Interfaces)

HP referentne arhitekture za Oracle

- Ispitani sustavi
- Standardizirane konfiguracije i administracija
- Dizajnirane za visoku raspoloživost i jednostavno upravljanje
- Osiguran prijenos znanja
- Modularni, standardizirani blokovi za izgradnju adaptivne infrastrukture



Poboljšana poslovna agilnost
 Kvalitetnije IT usluge
 Smanjeni IT troškovi

Zašto Oracle na HP Blade sustavima?

Modularnost

Server/storage/interconnect

Mogućnost jednostavnog dodavanja ili zamjene blade poslužitelja.

Integriranost

Wired-once slots – smanjeno kabliranje i složenost instalacije.

Svaki blade je spojen na već unaprijed konfigurirano napajanje, LAN i SAN.

Automatizam

Poslužitelji se automatski pronalaze pomoću HP upravljačkog softvera.



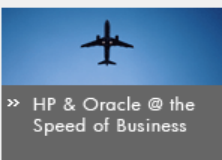
HP Reference Architectures for Oracle Grid on the HP BladeSystem

- » Large Enterprise Business
 - » Products
 - » Business & IT services
 - » Solutions
 - » Technologies
 - » Partners
 - » Support & Drivers
 - » Business Technology
 - » TV, News & Library



- ### Get started
- » HP and Oracle Alliance
 - » HP and Oracle Partnership
 - » Contact HP

- ### What's new
- » HP StorageWorks All-in-One Solution for Oracle Real Application Clusters on Linux
 - » HP BladeSystem for Oracle Optimized Warehouse



The HP Reference Architectures for Oracle are recommended hardware and software architectures optimized for the deployment of Oracle environments. For Oracle deployments in which customers are looking to design a flexible infrastructure that can fully leverage the scale-out model of Oracle Grid and the dynamic nature of a Service Oriented Architecture based on Oracle Fusion Middleware, HP highly recommends the [HP BladeSystem](#) with integrated HP Fibre Channel SAN. Where customers are looking for the convenience of a fully pre-integrated infrastructure HP recommends the [HP BladeSystem Matrix](#).

- ### News and Features
- » Press
 - » Events
 - » Customer Stories

The HP [HP BladeSystem](#) Reference Architectures for Oracle Grid leverage the HP Converged Infrastructure to help customers move from high-cost IT islands of technology to low-cost shared IT assets.

Learn more

- #### Collateral
- » Unleash the full potential of your Oracle solutions with HP Converged Infrastructure (brochure)
 - » Oracle on the [HP BladeSystem Matrix](#)
 - » HP Consolidation Solutions for Oracle Grid - Brochure
 - » HP Business Continuity Solutions for Oracle Grid - Brochure
 - » Energy-efficient Oracle solutions with HP - Brochure
 - » HP Reference Architecture for Oracle: Infrastructure for Consolidation and Modernization
 - » HP Reference Architecture for Oracle Grid on HP BladeSystem solution brief

- ### Related links
- » HP & OEL on ProLiant
 - » Oracle Database
 - » Oracle Middleware
 - » Oracle Applications
 - » HP Reference Architectures for Oracle
 - » Business Intelligence
 - » SOA/Oracle Fusion Middleware
 - » HP Storage with Oracle
 - » HP Software Solutions with Oracle
 - » HP for Oracle Applications
 - » HP Services for Oracle

Related Links



Model dinamičkog alociranja resursa

HP referentne arhitekture za Oracle – HP Blade sustavi

Integrirana upravljačka konzola



RDP također može alocirati više prostora na dijeljenom podatkovnom polju za RAC bazu.

Integrated Ethernet

Integrated FC SAN

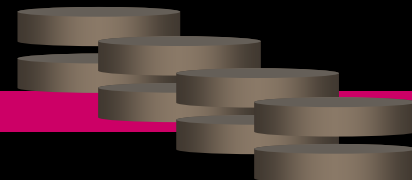
Oracle Application Server Cluster



Oracle Real Application Cluster



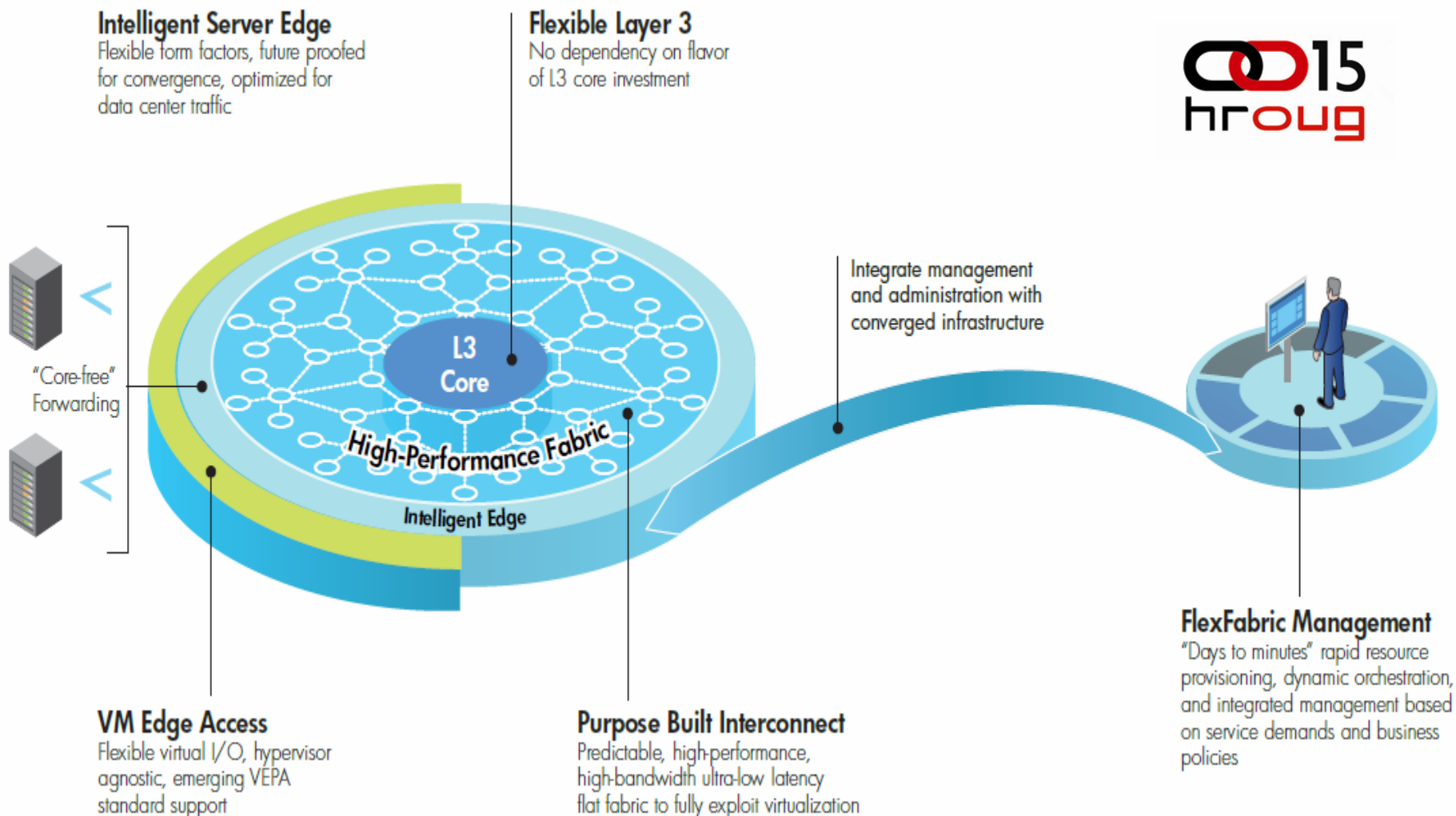
Shared database files



HP Converged Infrastructure

ORACLE®

HP Flex Fabric – potpuna virtualizacija i unifikacija prospojne mreže



Capacity Advisor (optimalna raspodjela opterećenja)

Mjeri iskorištenje procesora, memorije, mreže, diskova i napajanja

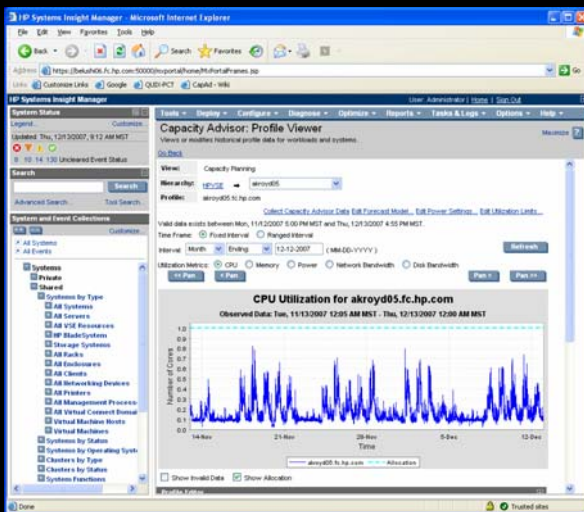
Dnevno prikuplja više od tisuću skupova mjernih podataka po poslužitelju

Tehnologija za konsolidaciju / raspodjelu opterećenja

5-Star rating sustav za best-fit raspodjelu podataka

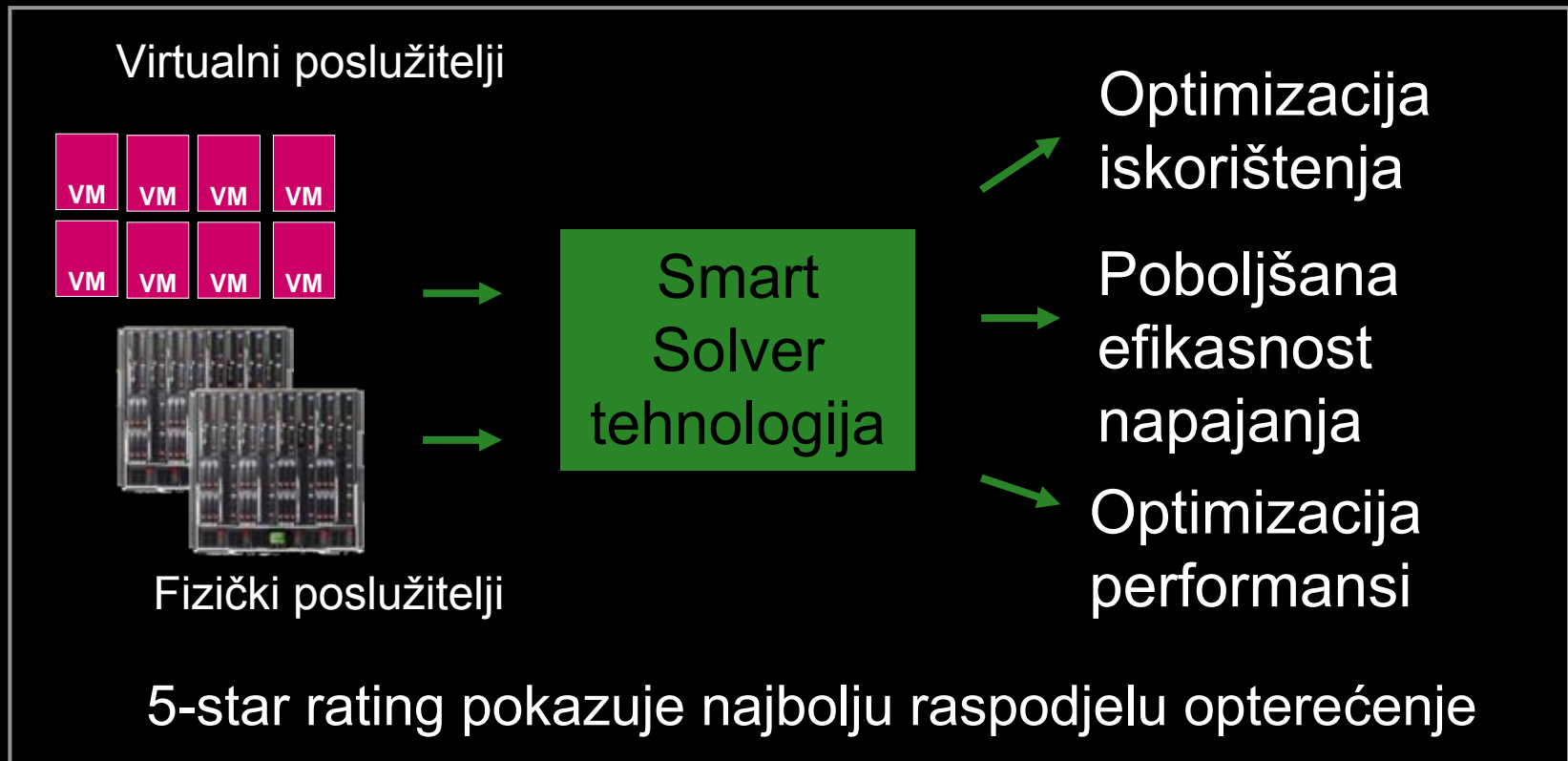
Prikupljeni podaci se koriste za trend analizu

Kreiranje inventara i reporta



Zasnovan na jedinstvenoj HP labs tehnologiji

CapAd (nastavak)



Upravljanje fizičkim i virtualnim resursima

Logički poslužitelj

Image

Konfiguracijski
zahtjevi

Jedinstveni ID

Poslužitelj

Poslužitelj

Virtual Fabric

HP tehnologija logičkih
poslužitelja

- Profil koji se lako kreira i slobodno premješta između fizičkih i virtualnih poslužitelja

Logički poslužitelj može biti:

- Aktivni fizički blade poslužitelj
- Aktivni virtualni poslužitelj
- Offline template



HP Blade Matrix



HP Blade Matrix: cloud in-the-box rješenje

Smanjenje troškova i složenosti upravljanja servisima



Jedna upravljačka domena sa tisućama fizičkih i virtualnih poslužitelja

Pristupačna failover & Disaster Recovery rješenja

Širok izbor Integrity, ProLiant, LAN i SAN komponenti

OS i hypervisor pristupi jednako podržani

HP Blade Matrix hardware

Starter kit

Expansion kit



Templates, Workflows, Automation
Konzistentnost i standardizacija

Vizualni
dizajn

Automatski
provisioning

Jednostavna
Integracija

IT sustavi

Insight Dynamics – VSE – Insight Orchestration

Systems Insight Manager & Insight Control

Virtual Connect/VCEM



Mreža



Skladište podataka



HP poslužitelji



Virtualne
mašine



Insight Orchestration Service Deployment



Kontinuirani
lifecycle
management
infrastrukture

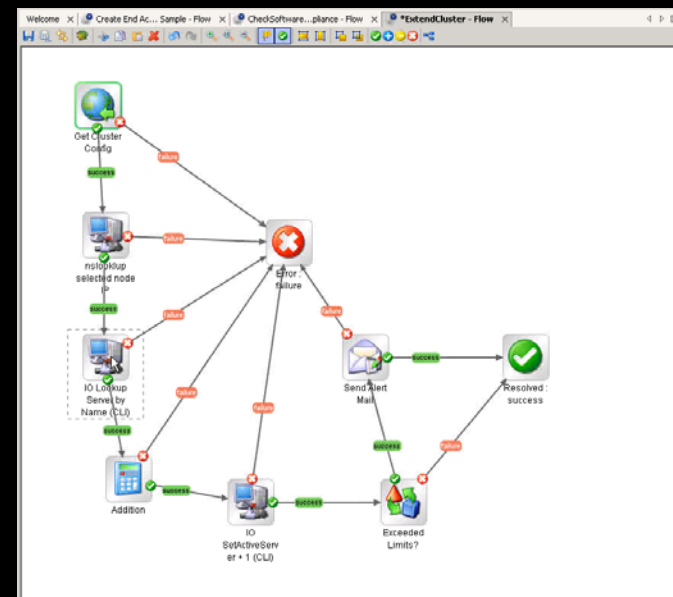
Insight
Dynamics

↑
Automatsko
upravljanje

Server
Automation

↑
Dodavanje poslužitelja
u klaster

Insight
Orchestration



↑
Zahtjev za dodatnim
resursima

Operations
Orchestration

↑
Monitoring odzivnih
vremena servisa

SiteScope

E-Shop V1 (Gold)

Template Name: Validation Status:

Published Cost... Workflows... Show Issues Messages...

Notes: 2 tier web app for E-Commerce Application (VM for Front End Oracle RAC Backend)

Components

Physical Server Group Virtual Server Group

SAN Storage Virtual Storage

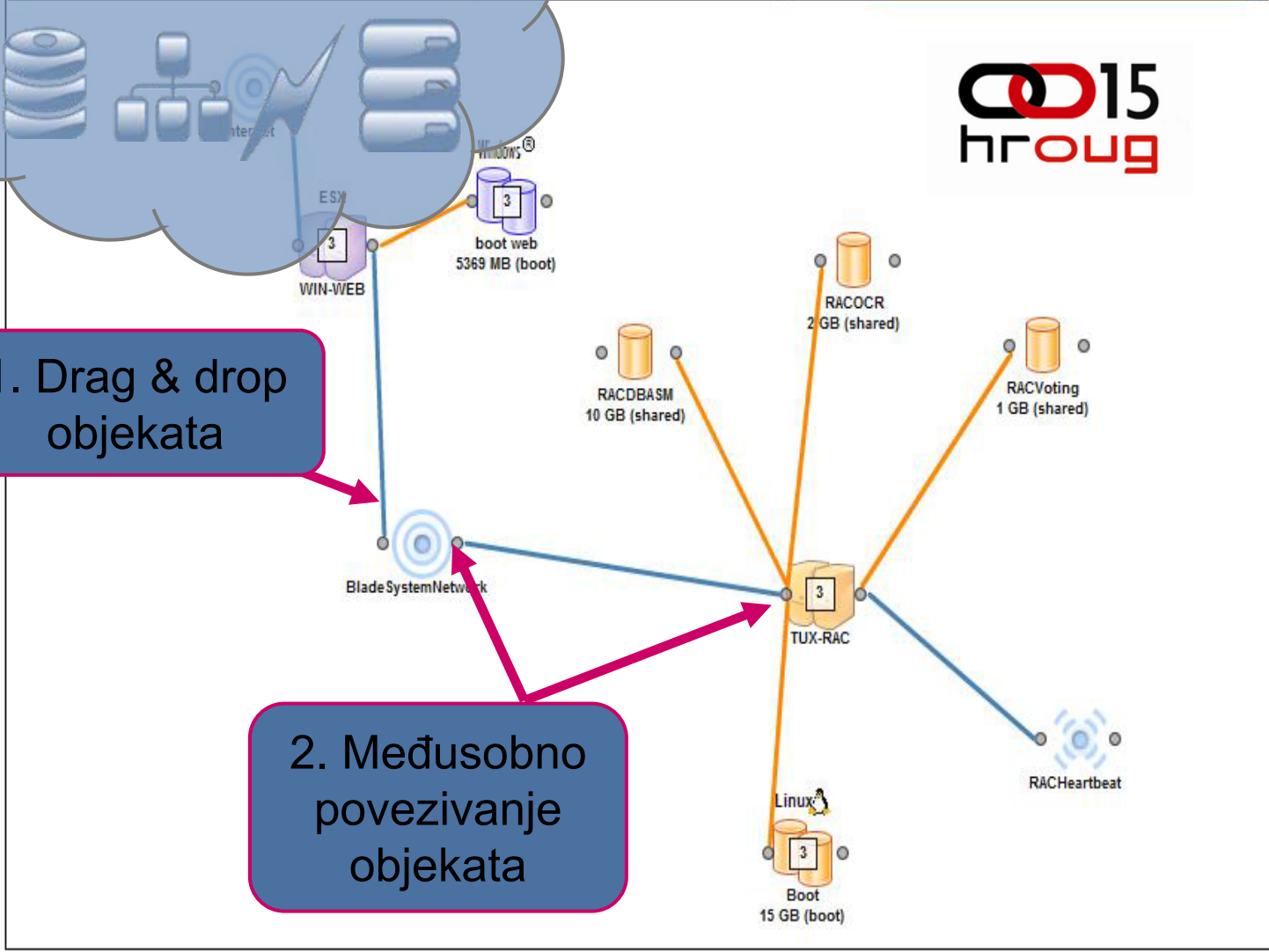
Network

Existing Templates

Published (11)

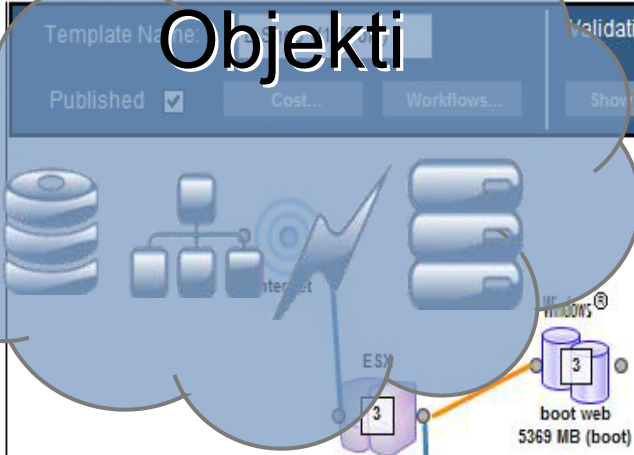
- E-Shop V1 (Bronze) (02/19/09 14:47)
- E-Shop V1 (Gold) (03/11/09 16:23)
- E-Shop V1 (Silver) (02/19/09 14:51)
- IIS Farm (Silver) (02/12/09 18:05)
- LAMP Stack (Silver) (02/12/09 18:06)
- Linux System (Bronze) (02/12/09 18:06)
- Linux System (Silver) (02/17/09 12:15)
- RAC-Cluster v1.0 (Silver) (02/19/09 14:51)
- WebLogic (Bronze) (02/12/09 18:04)
- WebLogic (Silver) (02/12/09 18:05)
- Windows System (Bronze) (02/12/09 18:05)

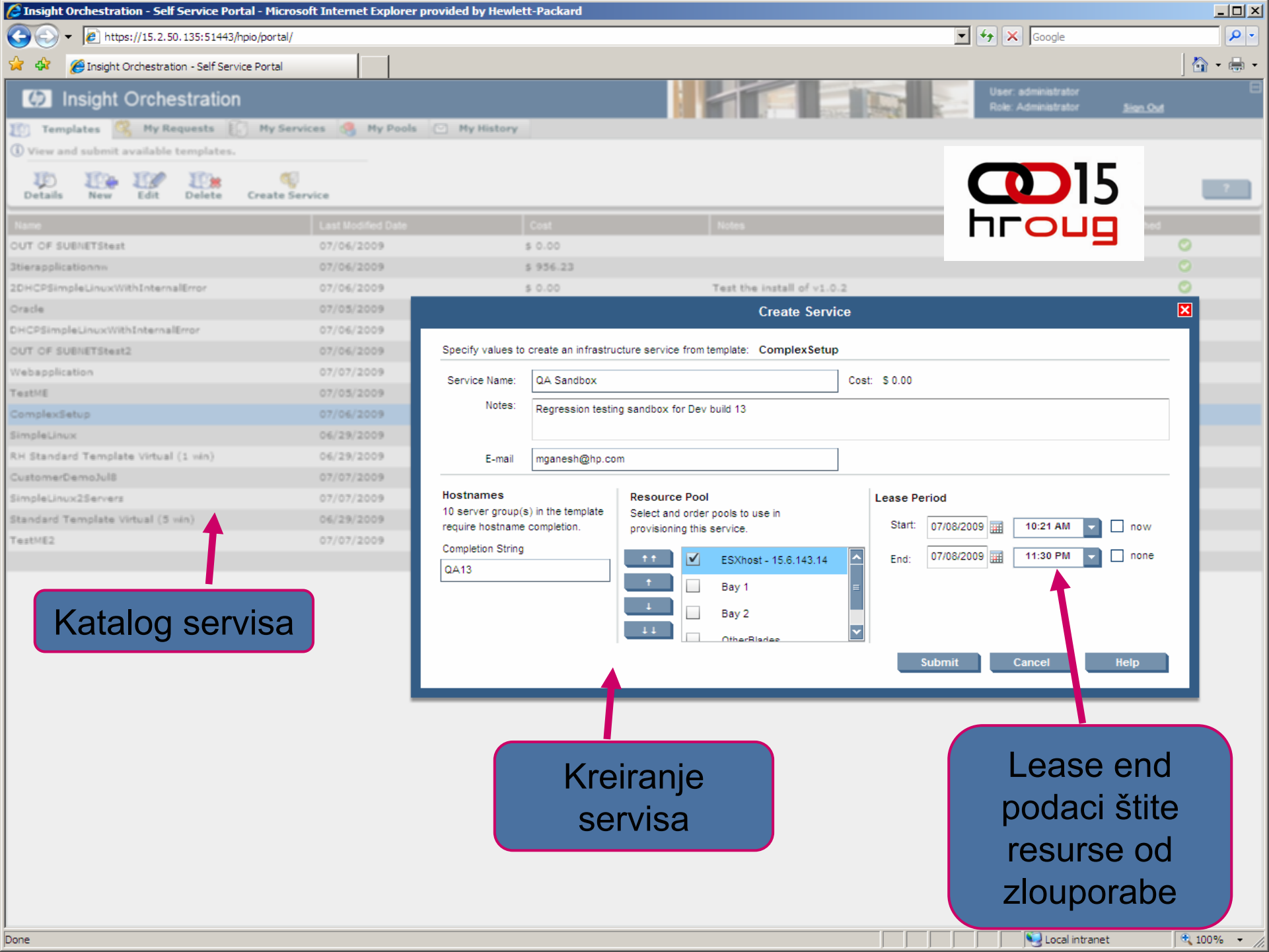
Working (?)



1. Drag & drop objekata

2. Međusobno povezivanje objekata





Create Service

Specify values to create an infrastructure service from template: **ComplexSetup**

Service Name: Cost: \$ 0.00

Notes:

E-mail:

Hostnames
10 server group(s) in the template require hostname completion.
Completion String:

Resource Pool
Select and order pools to use in provisioning this service.

- ESXhost - 15.6.143.14
- Bay 1
- Bay 2
- OtherBlades

Lease Period

Start: 07/08/2009 10:21 AM now

End: 07/08/2009 11:30 PM none

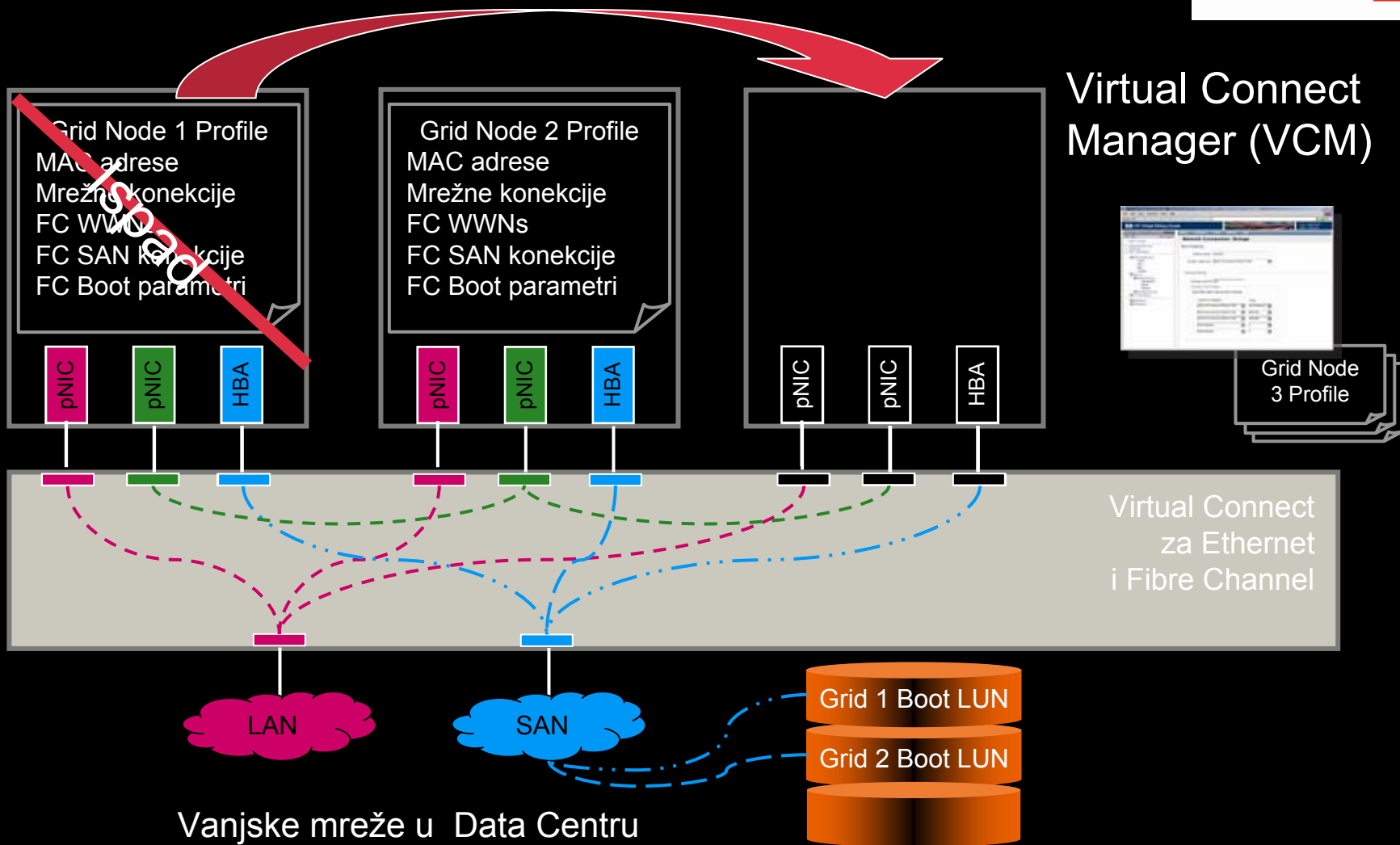
Katalog servisa

Kreiranje servisa

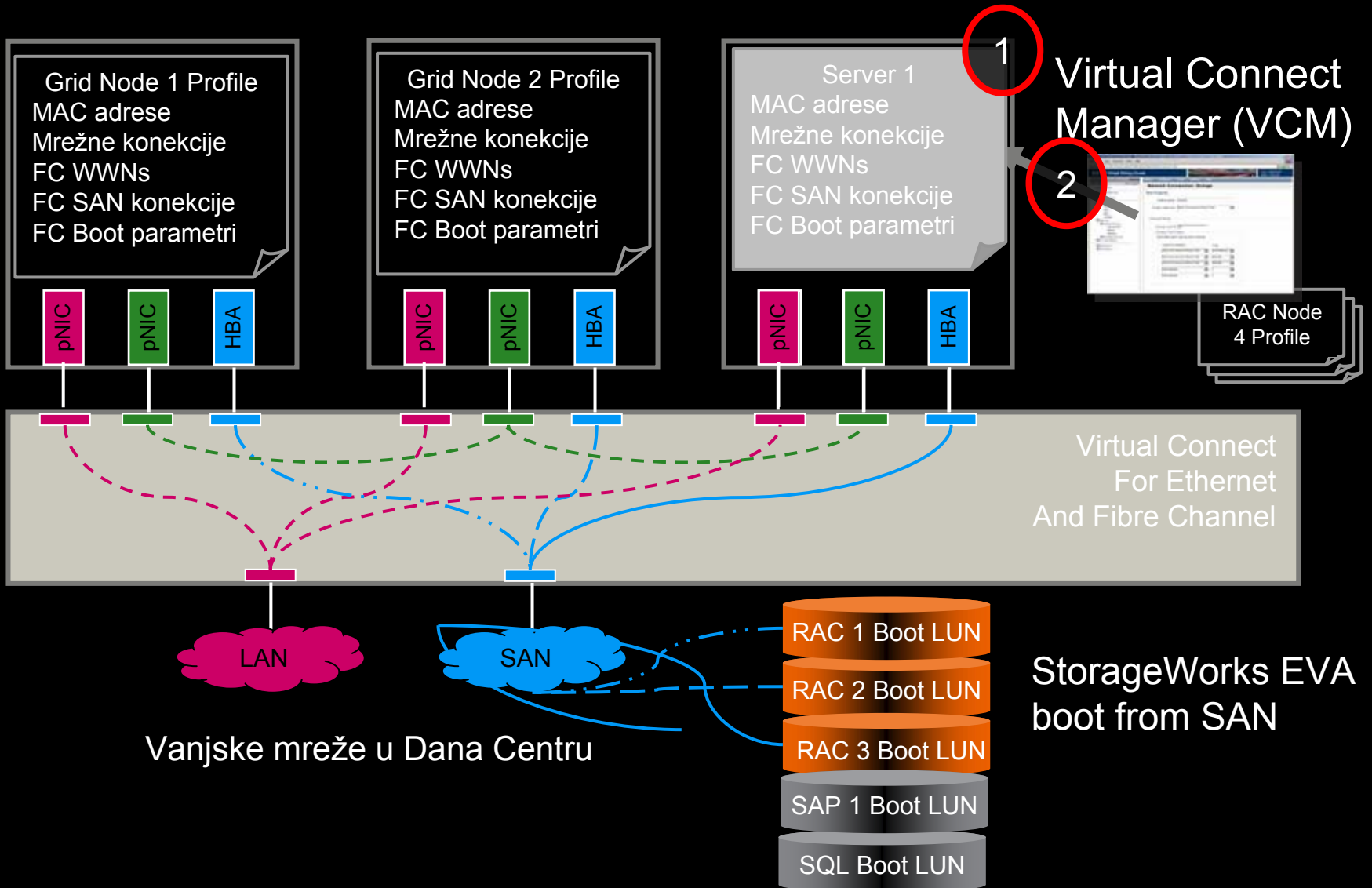
Lease end podaci štite resurse od zloruporabe

Primjene

Zamjena poslužitelja (rip & replace)



Relokacija resursa po potrebi



Demo